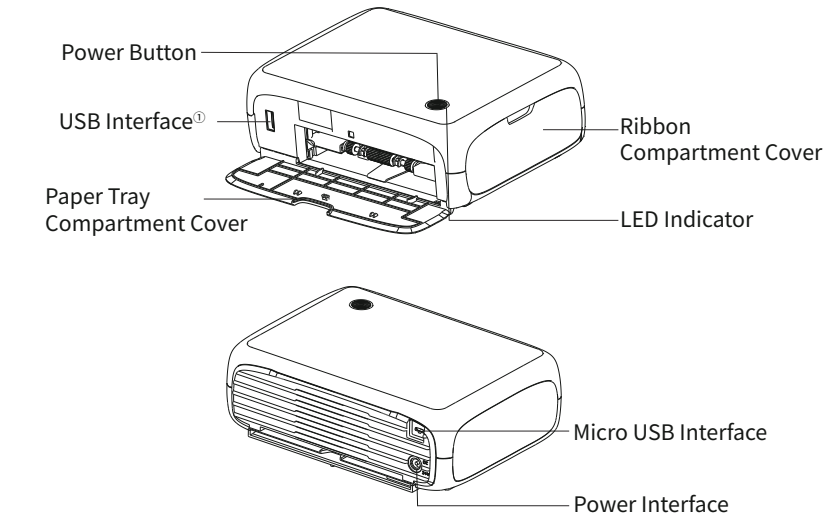
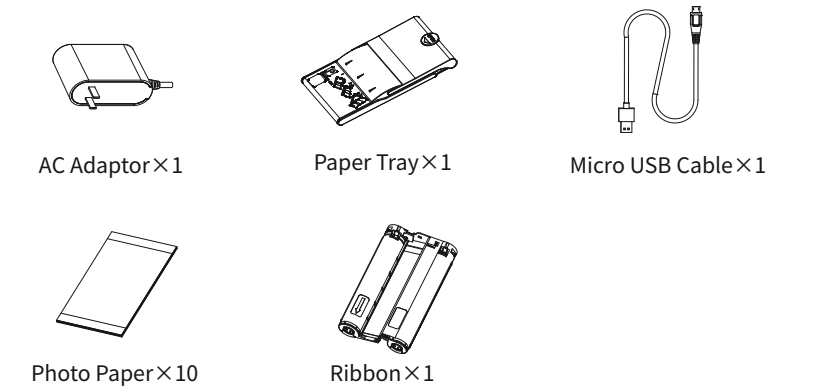


Product Introduction

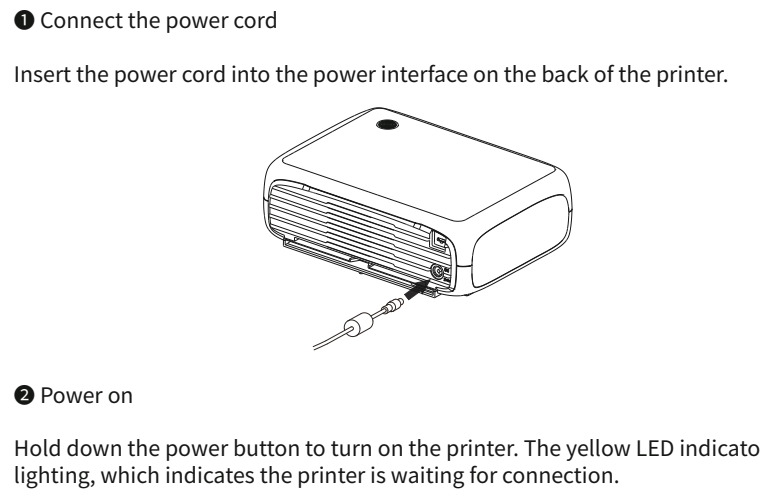


Accessory List

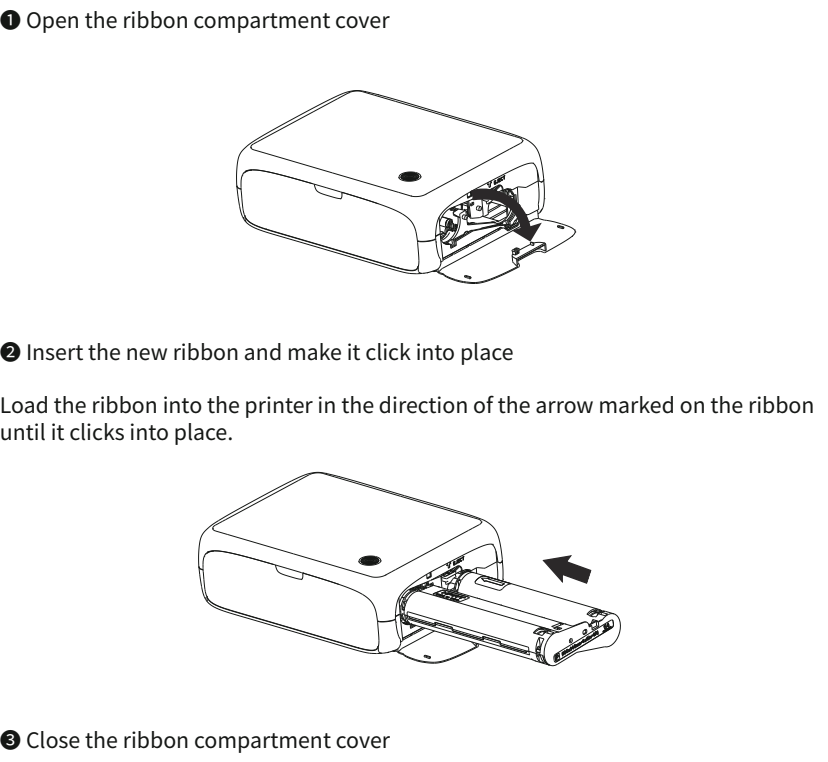


Notes: Only for cameras that support PicBridge connection.

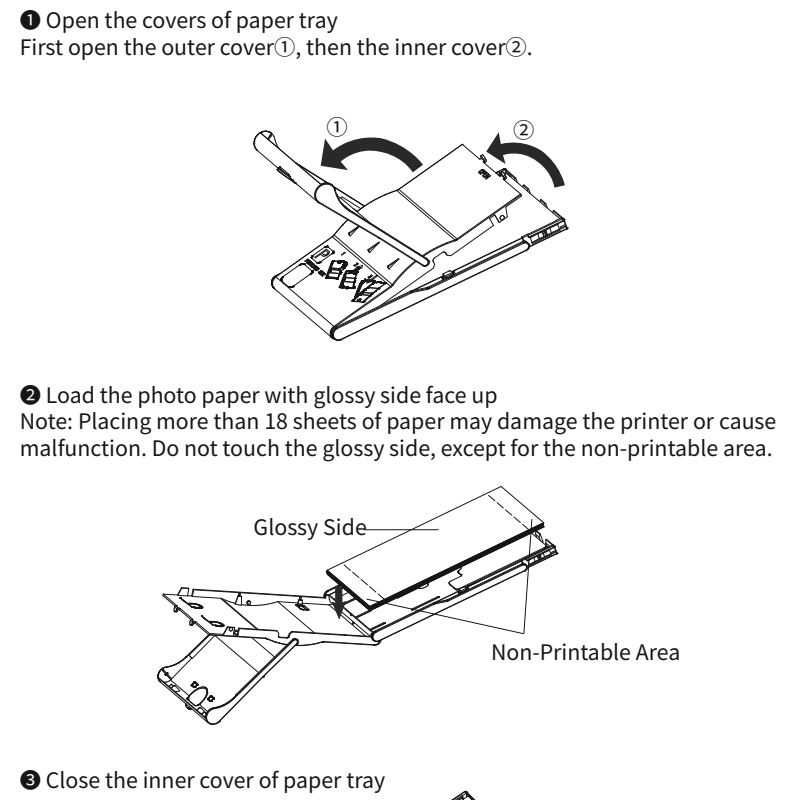
Power On and Connection



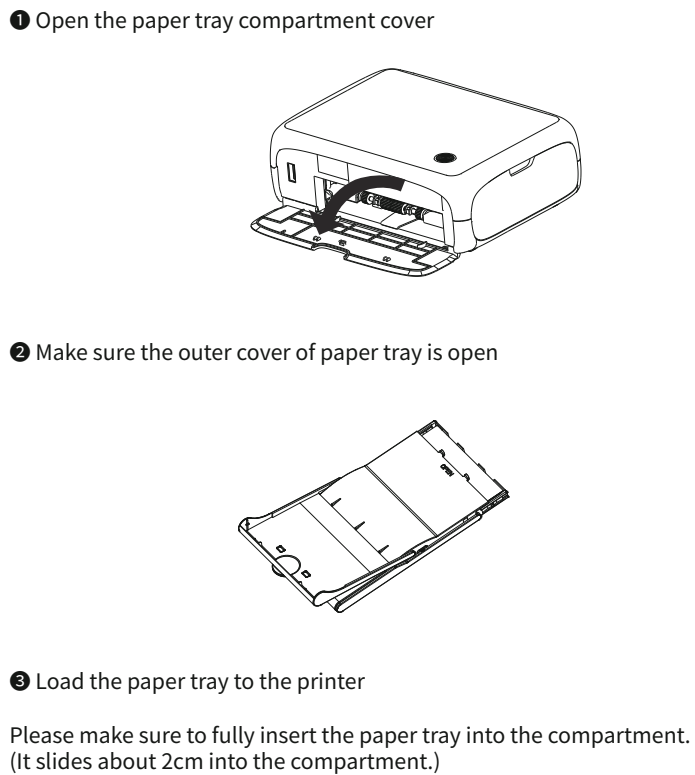
Loading the Ribbon



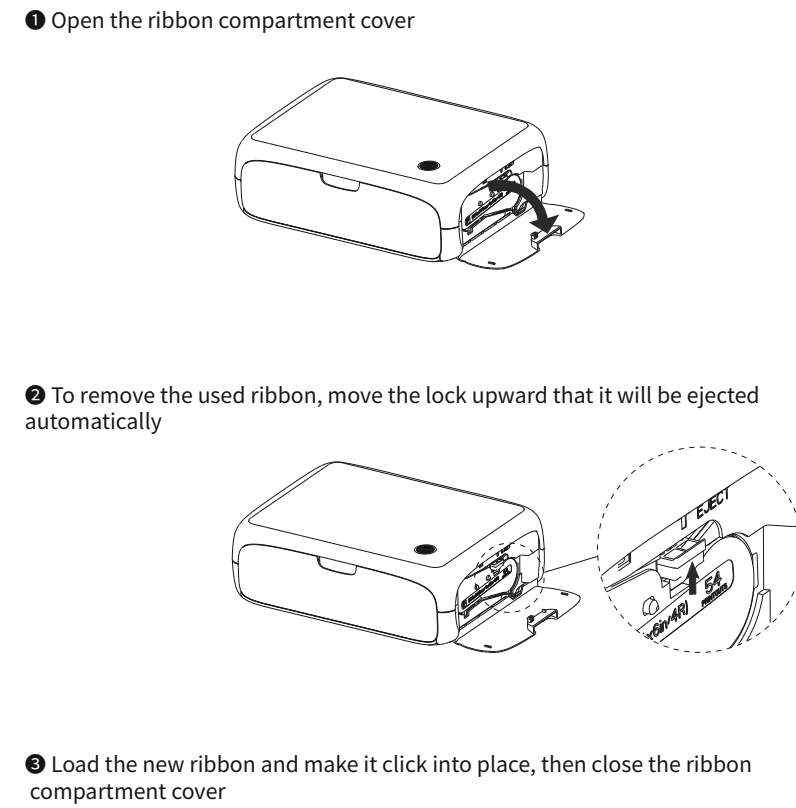
Loading the Photo Paper



Loading the Paper Tray



Replacing the Ribbon



Tips:
All the drawings of product and accessories in the quick start guide are for reference only.
Due to the updating and upgrading of the product, there may be some differences between the actual product and the drawings, please refer to the actual product.
For more product information, please contact iDPRT customer service.

iDPRT Photo Printer

Product Name: Photo Printer	Dimension: 180×131×62mm
Product Model: Zeva 1966	Weight: About 1.0kg
Input: 24V 2A	Operating Temperature: 5°C~35°C
Executive Standard: GB4943.1-2011, GB/T9254.1-2021, GB 17625.1-2012	
Wi-Fi Connection: Wi-Fi IEEE 802.11b/g/n 2.4GHz	

Manufacturer: Xiamen Hanin Electronic Technology Co., Ltd.
Add: No.96, Rongyuan Road, Tong'an District, Xiamen, China, 361100
Official Web: www.idprt.com
Customer Service Email 1: idprt@afterservice.vip
Customer Service Email 2: technical@idprt.com
After Service Web: <https://idprt.afterservice.vip>



Instructions for Button Operation

- Turn on the printer: hold down the power button for 3 seconds, the yellow LED indicator is lighting.
- Turn off the printer: hold down the power button for 3 seconds and then release it, the LED indicator will be off.
- Reset AP mode: in power-on status, hold down the power button until the blue LED indicator flashes three times, release the button and reset the Wi-Fi configuration; after resetting, the LED indicator will turn white.

Instruction for LED Indicator

LED Indicator	Status
Yellow, lighting	The system is starting
White, lighting	The printer is ready (Wi-Fi is in AP mode)
Green, lighting	The printer is ready (Wi-Fi is in STA mode)
White, slow flash	Printing
Red, lighting	Ribbon has run out Ribbon is abnormal Photo paper has run out
Red, quick flash	Paper jam or ribbon is jammed
Red, slow flash	TPH is over temperature
Yellow, slow flash	Firmware is updating

Working Position

- Please place the printer on the desk or other flat and stable surfaces.
- Leave some space (at least 10cm) behind the printer for paper out when printing.

Printing Wirelessly from Smartphones (AP Mode)

- ❶ Please make sure that the LED indicator of the printer shows white all the time, or else hold down the power button to switch to the AP mode;
- ❷ Open the Heyphoto app, click “Album”, select the images to print and then click “Next”;
- ❸ Adjust the images in print preview and click the printer icon on the top right corner;
- ❹ Select “Connect via printer hotspot”; wait for the Bluetooth searching until it shows “Zeva 1966-XXXX” and click to connect; (XXXX is last four digits of Bluetooth MAC address showed on the bottom of the printer)
- ❺ After connecting, the printer will start to print the photo.

Printing Wirelessly from Smartphones (STA Mode)

- ❶ Make sure the smartphone has been connected to the Wi-Fi hotspot;
- ❷ Open the Heyphoto app, click “Album”, select the images to print and then click “Next”;
- ❸ Adjust the images in print preview and click the printer icon on the top right corner;
- ❹ Select “Connect hotspot”; wait for the Bluetooth searching until it shows “Zeva 1966-XXXX” and click to connect; (XXXX is last four digits of Bluetooth MAC address showed on the bottom of the printer)
- ❺ Enter the passwords of Wi-Fi hotspot, click “Configure Wi-Fi” and the green LED indicator will flash slowly; (The time consuming of Wi-Fi configuration is related to the actual Wi-Fi network, please wait patiently)
- ❻ After connecting, the green LED indicator is lighting, and the printer will start to print the photo.

FAQ: If there is no connection, please try to restart.

Note: The above instructions take photo album printing for example, for LOMO, AR and Credentials printing, please experience on your own according to the guide of app.

Printing via USB from a Computer

- ❶ Connect one end of the USB cable to your computer and the other end to the Micro USB port on the back of the printer;
- ❷ Turn on the printer;
- ❸ Download the printer driver from iDPRT website or the QR code below and install it on your computer;
- ❹ After connecting, you can print the photos from the computer.



Or visit: <https://www.idprt.com/Driver/>

Precautions

- The best operating temperature is 0°C~40°C, if the environmental temperature is too high, the print quality may be affected.
- Please do not use the unofficial adaptor, color ink and photo paper to ensure the print quality.
- Do not touch the film of color ink and the glossy side of photo paper in case of fingerprints that may affect the print quality.
- During printing, the area around the thermal print head is very hot. Do not touch it, as you could be burned.
- Do not pull out the photo paper by force during printing, or else it may damage the printer.
- Please remove the paper tray when it is not used for a long time, and close the covers of the printer and the paper tray to avoid dust entering.

FCC WARNING

This device complies with part 15 of the FCC Rules. Operation is subject to the following two conditions: (1) this device may not cause harmful interference, and (2) this device must accept any interference received, including interference that may cause undesired operation.

Any changes or modifications not expressly approved by the party responsible for compliance could void the user's authority to operate the equipment.

NOTE: This equipment has been tested and found to comply with the limits for a Class B digital device, pursuant to Part 15 of the FCC Rules. These limits are designed to provide reasonable protection against harmful interference in a residential installation. This equipment generates, uses and can radiate radio frequency energy and, if not installed and used in accordance with the instructions, may cause harmful interference to radio communications.

However, there is no guarantee that interference will not occur in a particular installation. If this equipment does cause harmful interference to radio or television reception, which can be determined by turning the equipment off and on, the user is encouraged to try to correct the interference by one or more of the following measures:

- Reorient or relocate the receiving antenna.
- Increase the separation between the equipment and receiver.
- Connect the equipment into an outlet on a circuit different from that to which the receiver is connected.
- Consult the dealer or an experienced radio/TV technician for help. To maintain compliance with FCC's RF Exposure guidelines, This equipment should be installed and operated with minimum distance between 20cm the radiator your body: Use only the supplied antenna.

FCC ID: 2AUTE-ZEVA1966

Disclaimer

Thank you for purchasing our product! By using this product, you hereby signify that you have read the Disclaimer and all warnings carefully and that you understand and agree to abide by the terms and conditions herein. The user should observe safe and lawful practices including, but not limited to, those set forth in this document. Our company therefore holds no liability for damages caused by force majeure, used by a third party, incorrect use, non-compliance with this user manual or intentional misconduct on the part of the user.

Except for the scope prohibited by the applicable laws, the company is not responsible for any incidental, indirect, special or consequential damages, including but not limited to the loss of profits, income or data due to the violation of explicit or implied warranties or conditions mentioned in this user manual.

Information in this user manual is for informational purposes only. It is subject to change without prior notice, due to the manufacturer's continuous development program. This document supersedes and replaces all information supplied prior to the publication hereof.



After Service



Or visit: <https://idprt afterservice.vip>
Official Web: www.idprt.com
Customer Service Email 1: idprt@afterservice.vip
Customer Service Email 2: technical@idprt.com

iDPRT Photo Printer Quick Start Guide Zeva 1966

Please read the guide carefully before using the product and keep it properly.